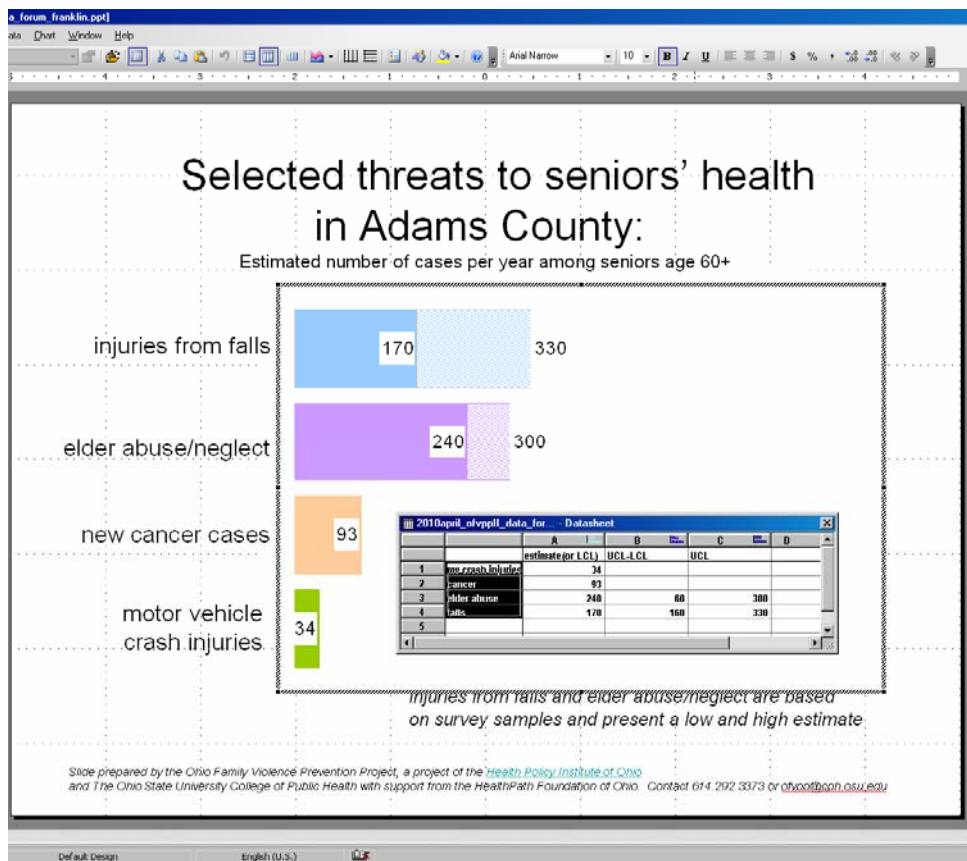


Creating a Graph Comparing Family Violence to Other Important Threats within Individual Ohio Counties

The Ohio Family Violence Prevention Project
ofvpp@cph.osu.edu 614.293.3373

- 1) Visit http://www.hpio.net/OFVPP_CountyProfiles.html and download the relevant threats graph template (i.e., teenage girls; adult women; seniors) to your computer.
- 2) Open the file.
- 3) Double-click on the graph to open the data sheet
- 4) Download the county profile you're interested in and choose which "threats" graphs you wish to create.
- 5) Enter the appropriate figures from the county profile according to the table on the next page (examples from Licking County)
- 6) Change the title to the appropriate county
- 7) Review the "Sources and Methods" document so you know exactly what the data mean, their sources and their limitations. (http://www.hpio.net/review/Sources_and_Methods!.pdf)



Teenage Girls

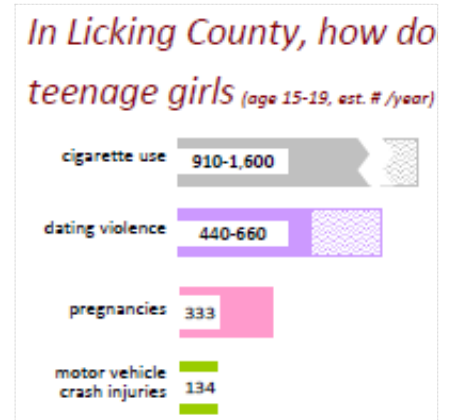
		A	B	C
		estimate(or LCL)	UCL-LCL	UCL
1	mv crash injuries	134		
2	pregnancies	333		
3	dating violence	440	220	660
4	cigarettes	910	690	1600

A1 = # of motor vehicle crash injuries among teenage girls
 A2 = # of pregnancies among teenage girls

A3 = # of teenage girls experiencing dating violence (lower estimate)
 B3 = C3 – A3
 C3 = # of teenage girls experiencing dating violence (upper estimate)

A4 = # of teenage girls regularly smoking cigarettes (lower estimate)
 B4 = C4 – A4
 C4 = # of teenage girls regularly smoking cigarettes (upper estimate)

Excerpt from county profile



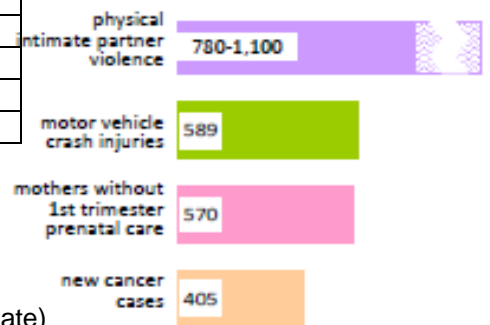
Adult women

		A	B	C
		estimate(or LCL)	UCL-LCL	UCL
1	cancer	405		
2	prenatal	570		
3	mv crash injuries	589		
4	p-IPV	780	320	1100

A1 = # of new cancer cases among adult women
 A2 = # of mothers without first trimester prenatal care
 A3 = # of motor vehicle crash injuries among adult women

A4 = # adult women with physical intimate partner violence (lower estimate)
 B4 = C4 – A4
 C4 = # adult women with physical intimate partner violence (upper estimate)

adult women (age 18+, est. # / year)



Seniors

		A	B	C
		estimate(or LCL)	UCL-LCL	UCL
1	mv crash injuries	170		
2	cancer	502		
3	elder abuse	1200	300	1500
4	falls	860	840	1700

A1 = # of motor vehicle crash injuries among seniors
 A2 = # of new cancer cases among seniors

A3 = # of seniors experiencing elder abuse or neglect (lower estimate)
 B3 = C3 – A3
 C3 = # of seniors experiencing elder abuse or neglect (upper estimate)

A4 = # of seniors injured in falls (lower estimate)
 B4 = C4 – A4
 C4 = # of seniors injured in falls (upper estimate)

seniors (age 60+, est. # / year)

